

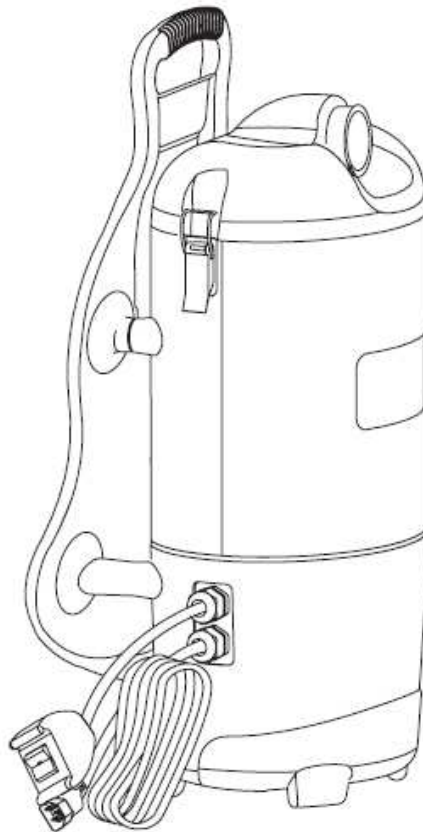
ORIGINAL INSTRUCTIONS

CAUTION – READ THESE INSTRUCTIONS BEFORE USING THE MACHINE

User instructions

Valet BackPack

Commercial backpack vacuum cleaner



Contents

1.	General information	4
1.1.	Important Safety Advice.....	4
1.2.	Guidelines for the operator	5
1.3.	Transporting the machine	5
2.	Preparing for use	5
2.1.	Electrical connection.....	5
2.2.	Symbols & Markings	5
2.3.	Fitting the cloth bag	5
2.4.	Fitting the paper vacuum bag	6
2.5.	Fitting the hose, handle, wand and floor tool / accessories.....	6
3.	Controls.....	7
4.	Operation	7
5.	Storage	7
6.	Maintenance	7
7.	After Sales Service	7
8.	Guarantee	8
9.	Waste Electrical & Electronic Equipment (WEEE)	8
10.	Technical specification.....	9
11.	Accessories.....	9
12.	Fault Diagnosis	9
13.	Service drawings.....	10
14.	EC Declaration of Conformity	14

IMPORTANT
BEFORE USE READ THESE INSTRUCTIONS AND RETAIN FOR FUTURE REFERENCE

1. General information

This commercial vacuum cleaner has been designed for the collection of dust in indoor areas. It should not be used outdoor areas.

We recommend that any user not familiar with carpet cleaning should read these user instructions fully before using the machine. If you have any queries please contact the supplier who you purchased the machine from or Truvox International on the contact details provided at the back.

This machine must only be used for the manufacturer's approved application. **Do not use** the machine where it is suspected that the carpet, floor or upholstery contains health endangering dust or debris such as asbestos or chemical waste. If this is suspected **do not proceed**, contact your supervisor, supplier or Truvox International for advice.

The following instructions contain important information about the machine and safety advice for the operator.

Equipment must be operated, serviced and maintained in accordance with the manufacturer's instructions. **If in doubt contact the supplier of your machine.**

These instructions are valid for the following models:

Valet BackPack – VBP

1.1. Important Safety Advice

When using electrical equipment basic safety precautions should be followed including the following.

- Read all instructions carefully before use.
- This appliance is suitable for commercial use, for example in hotels, schools, hospitals, factories, shops, offices and rental businesses.
- This machine is not intended for use by persons (including children) with reduced physical, sensory or mental capabilities, or lack of experience and knowledge, unless they have been given supervision or instruction concerning use of the machine by a person responsible for their safety.
- Keep children and unauthorised persons away from the machine when in use.

- Before using the appliance, check that the mains power voltage corresponds with the voltage shown on the rating plate.
- All parts are to be positioned as indicated in the instructions before using the machine.
- Do not operate the machine if it malfunctions or is damaged in any way. Contact an authorised service agent for repair or adjustment.
- Do not operate switches or touch the mains plug with wet hands as this may cause electric shock.
- When unplugging pull the plug, not the supply cord.
- Do not pull or carry by cord, use cord as a handle, close a door on cord, or pull around sharp edges or corners.
- Keep hair, loose clothing, fingers and all parts of body away from openings and moving parts.
- Keep cord away from heated surfaces.
- Do not use where hazardous dust is present.
- Do not use in an explosive atmosphere.
- Do not pick up oil or other flammable material.
- Do not use to pick up moisture or any liquids.
- Do not leave the machine connected to the electricity supply when not in use, always remove the plug from the socket-outlet.
- Switch off the machine before removing the plug.
- Keep the power supply cord clear of moving parts. During operation hazard may occur when running the machine over the power supply cord.
- The power supply cord must be regularly inspected for signs of damage. If the power supply cord is damaged, it shall only be replaced by the manufacturer, its service agent or a similar qualified person in order to avoid a hazard.
- Only replace the supply cord with the type specified in the instruction manual.
- Do not operate the machine with a damaged supply cord or plug, or after the machine malfunctions or is damaged in any way. Contact an authorised Service Agent for repair or adjustment.
- The plug of the power supply cord must be removed from the socket-outlet before commencing cleaning of the machine or undertaking maintenance operations.
- Do not kink or twist the power cord.
- Take care when using a machine near the top of stairs to avoid overbalancing.

1.2. Guidelines for the operator



WARNING

Operators must be fully trained in the use of the machine in accordance with these instructions, able to perform user maintenance and the correct selection of accessories.

- Operators should be physically capable to manoeuvre, transport and operate the machine.
- Operators should be able to recognise unusual operation of the machine and report any problems.
- Only use the machine on firm level surfaces.
- Wear suitable footwear to avoid slipping.
- Wear suitable clothing to keep dry and warm.
- Where possible implement job rotation and adequate rest periods to avoid continuous use of the same muscles.
- Do not leave machine running unattended
- Do not smoke when using the machine.
- Do not put any objects into openings. Do not use with any opening blocked: keep free of dust, debris, hair, or anything that may reduce air flow.



WARNING This machine is for dry use only.



CAUTION - This machine is for indoor use only and should not be used or stored outdoors or in wet conditions.



CAUTION - If it is suspected that there is hazardous dust or flammable materials stop cleaning the area immediately and consult your superior.



WARNING Only use accessories and spare parts provided with the machine or those approved by the manufacturer. The use of other accessories may impair the safety of the machine.

- Ensure the machine is switched off before adding or changing accessories.

1.3. Transporting the machine



CAUTION – Incorrect lifting techniques may result in personal injury, where applicable do not lift large and heavy machines without assistance. We advise that the manual handling regulations are followed. Please refer to the technical table for details on weight of machine.

When transporting the machine ensure that all components, tanks and removable parts are securely fastened, and that the supply cord and plug are not trailing. Detach hose and wand from machine where applicable.

Take extreme care when moving the machine up or down steps or stairs.

2. Preparing for use

2.1. Electrical connection

Before connecting the machine to the power supply, check that your supply voltage corresponds with that marked on the rating label.

The power supply cord plus any extension leads should not exceed 30m in total, otherwise you may experience problems starting up the machine. The cross-section of any extension cable wiring must be at least 2,5 mm².

Should an extension cord be used, ensure cord rating is adequate for the equipment. Do not use extension cord in coiled condition as this could result in overheating of the cord.

UK only

The supply cord for 230v models is fitted with a plug containing a 13 amp fuse. Should the fuse require replacement it must only be replaced by a 13 amp fuse conforming to BS1362, and the fuse cover must be refitted. If the fuse cover is lost the plug must not be used until the correct replacement cover is fitted.

IMPORTANT - If the supply cord is damaged, it must only be replaced by a special cord available from the manufacturer or an authorised service agent.

2.2. Symbols & Markings



WARNING

2.3. Fitting the cloth bag



WARNING - Before undertaking assembly or changing of accessories/tools switch off machine and unplug from the electricity supply.

- Open the lid and ensure that the cloth bag is correctly located and the flexible ring provides a proper seal when the lid is closed (Fig 1). For optimum filtration and maximum hygiene, it is advisable to use a paper vacuum bag in addition to the standard cloth bag.



Fig 1

2.4. Fitting the paper vacuum bag

- To fit the paper vacuum bag, simply insert it into the cloth bag, making sure that the cardboard disc is centred on the flexible sealing ring. When you replace the lid, the short nozzle in the centre of the lid will be forced into the central hole of the cardboard disc of the paper vacuum bag thus providing a tight seal. Make sure the paper vacuum bag is tightly secured over the short nozzle before vacuuming (Fig 2).



Fig 2

- After fitting the cloth and paper bag lock the lid down with the two latches (Fig 3).



Fig 3

- Always ensure that the vacuum bag is empty before vacuuming. Your Backpack vacuum has been fitted with a thermal overload to protect the motor against damage should the airflow be blocked for extended periods. This may occur if the vacuum bag is overfull or if the vacuum hose is blocked. The vacuum motor will stop before it can get too hot. If this happens, replace the vacuum bag or free any blockage and ensure that adequate airflow is restored. The motor will automatically restart after it has cooled to a safe operating temperature.

2.5. Fitting the hose, handle, wand and floor tool / accessories

- Insert the hose into the socket on the front of the vacuum cleaner (Fig 4)



Fig 4

- Fit the handle to the wand connection (Fig 5).



Fig 5

- Fit the telescopic wand to the floor tool or accessory (Fig 6).



Fig 6

- To lengthen the telescopic wand slide the lock and pull the tube out (Fig 7).

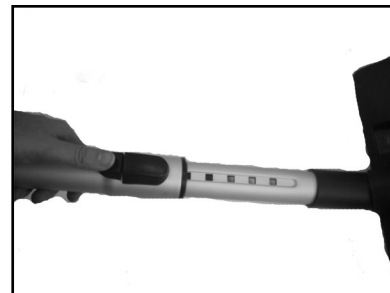


Fig 7

3. Controls

- The on off switch is positioned on the switch box and which can be clipped onto the waist belt when in use (Fig 8)



Fig 8

- To turn the vacuum on, push the switch located on the switch box to the ("I") position.
- To turn the vacuum off, push the switch located on the switch box the ("O") position.

4. Operation

- Place the vacuum on your back, adjust the shoulder straps until you feel comfortable and then tighten the waist belt. The Backpack vacuum is designed to ride higher on your back for maximum comfort.
- Plug the cord into a suitable power outlet. Always unwind the cord completely before vacuuming. It is important to maintain the power cord in good condition. Use care when pulling the cord around sharp edges and through doorways.

4.1. Using the floor tool

- The floor tool can be used for cleaning carpets and hard floors. The floor heads pedal should be down when cleaning hard floors (Fig 9) and in the up position when cleaning carpets (Fig 10).



Fig 9


Fig 10



5. Storage

- Always unplug the machine after use.
- After use check the bag. If full, replace the bag.
- Wind the supply cord ensuring that the plug is not trailing on the floor.
- Store the machine in a dry indoor area only.

6. Maintenance

 **WARNING** - Before undertaking maintenance operations or adjustments switch off machine and unplug from the electricity supply.

The machine requires minimum maintenance apart from the following checks by the operator.

- **Supply cord** - Regularly inspect sheath, plug and cord anchorage for damage or loose connection.
- **Body of the vacuum** – Clean with a damp cloth.
- **Cloth vacuum bag** – after emptying the vacuum bag, turn it inside out and shake as much dust out as possible. Always use a paper bag with the cloth bag.
- **Vacuum filter** – Check the vacuum filters, clean and replace as appropriate.
- **Hose, wand and vacuum accessories** – Check and remove any debris or lint build-up from the head.

IMPORTANT – All other servicing and repairs should only be performed by a Truvox engineer or Authorised Service Agent.

IMPORTANT – Should the machine fail to operate please refer to the fault diagnosis section in the back of the instruction manual. If the problem / remedy is not listed please contact Truvox Customer Service Department for rapid attention.

7. After Sales Service

Truvox machines are high quality machines that have been tested for safety by authorised technicians. It is always apparent that after longer working periods, electrical and mechanical components will show signs of wear and tear or ageing.

Under extreme or specialised conditions and/or insufficient maintenance, shorter maintenance intervals are necessary. Use only original Truvox spare parts. **Use of other spare parts will invalidate all warranty and liability claims.**

Should you require after sales service please contact the supplier from whom you purchased the machine, who will arrange service. Repairs and servicing of Truvox products should only be

performed by trained staff. Improper repairs can cause considerable dangers to the user.

8. Guarantee

Your product is guaranteed for **one** year from the date of original purchase, or hire purchase, against defects in materials or workmanship during manufacture. Within the guarantee period we undertake at our discretion, to repair or replace free of charge to the purchaser, any part found to be defective, subject to the following conditions.

CONDITIONS

1. Claims made under the terms of the guarantee must be supported by the original invoice/bill of sale issued at the time of sale, or the machine Serial Number.
2. For claims under this guarantee contact the supplier from whom you purchased the product who will arrange the appropriate action. Do not initially return the product as this could result in transit damage.
3. Neither Truvox nor its distributors shall be liable for any incidental or consequential loss.
4. This guarantee is governed by the laws of England. This guarantee does not cover any

of the following: Periodic maintenance, and repair or replacement of parts due to normal wear and tear.

5. This guarantee is governed by the laws of England. This guarantee does not cover any of the following: Periodic maintenance, and repair or replacement of parts due to normal wear and tear.
 1. Damage caused by accident, misuse or neglect, or the fitting of other than genuine Truvox parts.
 2. Defects in other than genuine Truvox parts, or repairs, modifications or adjustments performed by other than a Truvox service engineer or authorised service agent.

9. Waste Electrical & Electronic Equipment (WEEE)

Do not dispose of this device with unsorted waste. Improper disposal may be harmful to the environment and human health.



Please refer to your local waste authority for information on return and collection systems in your area.

10. Technical specification

All models: 230-240v / 50Hz, Class II construction. Fitted with 15m supply cord and 13A fused plug.

Model		Valet BackPack
Code		VBP
Voltage	v / Hz	230-240/50
Vac motor	W	1400
Protection class	IP	20
Dust capacity	l	5
Airflow	l/sec	52
Vacuum	kPa	25
Vacuum	mm/wg	2540
Sound pressure level (see note 1)	dB(A)	75
Cable length	m	15
Size	cm	60 x 30 x 25
Weight empty	kg	4.5
Warranty		1 year

1 – Sound pressure level under normal operating conditions is less than 80 dB(A) when measured at a distance of 1 metre from machine and 1.6 metres above the floor. Measurements recorded using hand held meter.

Truvox International is a BSI Registered Company and our policy is one of continuous development. We reserve the right to change specifications without prior notification.

11. Accessories

Accessory	Part No.	Description
Dust bags	U2-U11-078	Pack of 10 paper bags
Hose	U2-U11-085	Hose
Telescopic wand	BA10623582	Wand
Floor tool	BA10973582	Combination floor tool for use on hard and carpeted floors
Tool kit	U2-U11-086	Inclusive of dusting brush, nozzle and crevice tool

IMPORTANT: Genuine accessories are only available from authorised Service Agents or the Truvox Customer Service Department.

12. Fault Diagnosis



WARNING - Before undertaking maintenance operations or adjustments switch off machine and unplug from the electricity supply.

The following simple checks may be performed by the operator.

Problem	Reason	Remedy
Machine not working	Lack of voltage/electrical supply.	Check fuse *, supply cord, plug and socket outlet.
Loss of suction	Bag full Blocked hose or wand Motor not working	Replace bag Remove obstruction Contact supplier
Motor is not running	Broken switch Defective power cord Defective motor	Contact supplier Contact supplier Contact supplier

* If the fuse blows several times, the machine should be checked by an authorised Service Agent.

Service Parts List (Kits)

Model Ref.:- VBP

SERIES D (From Serial Number UK: 005501 Euro: 1001)

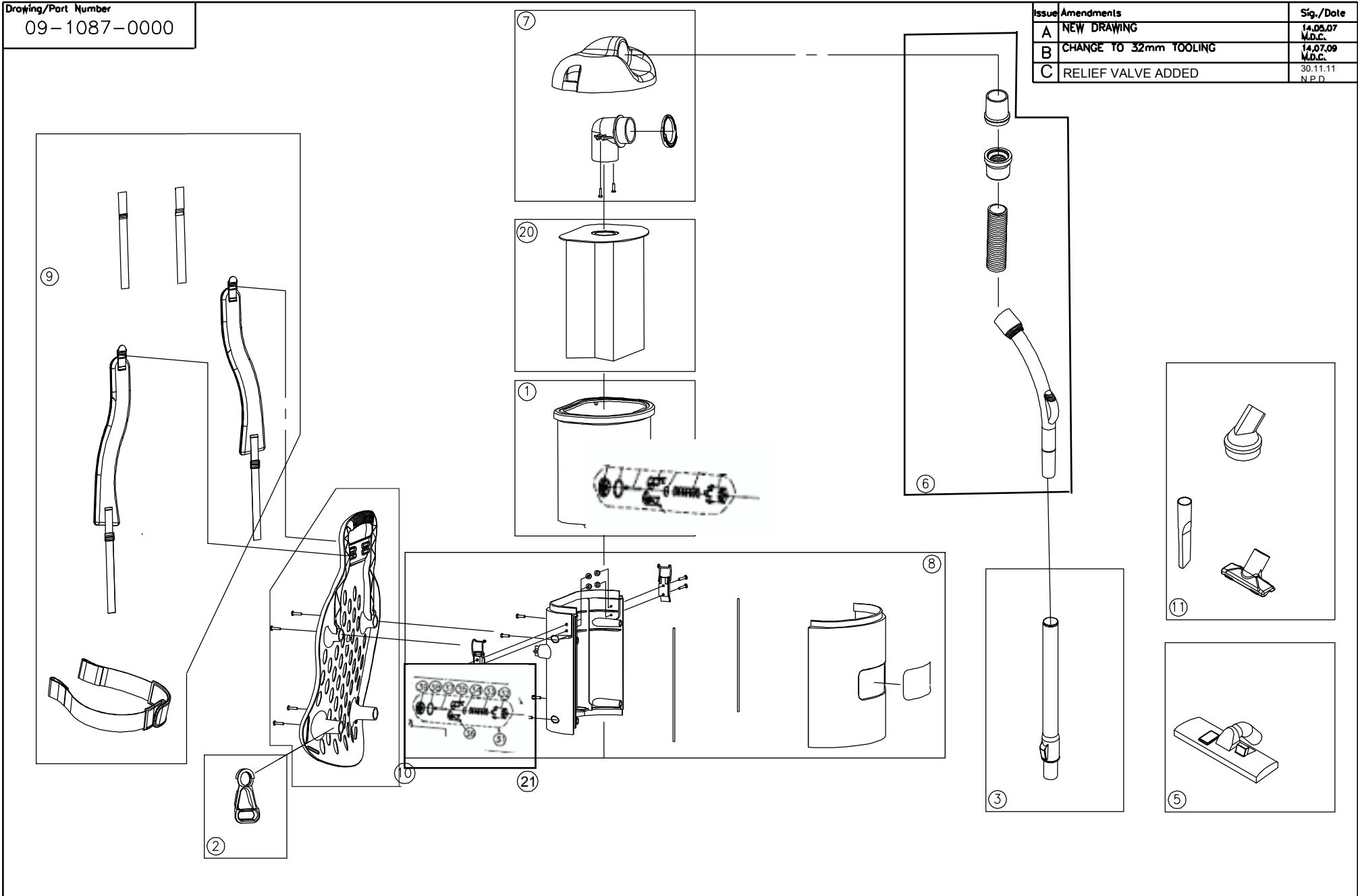
Service Parts List (Kits) Issue 6 Dated 30-November-2011

Ref. Drawing 09-1087-0000 Issue C Dated 30-November-2011

Drawing Ref.	Part Number	DESCRIPTION	Qty Per Kit
1	BA01834000	SHAKE OUT BAG	1
2	BA00163582	CORD CLIP	1
3	BA10623582	TELESCOPE WAND	1
4	N/A	N/A	N/A
5	BA10973582	CARPET TOOL	1
6	U2-U11-085	HOSE ASSY	1
7	U2-U11-131	COVER ASSY	1
8	U2-U11-227	CANISTER ASSY	1
9	TU1AB00014	SHOULDER STRAP ASSY	1
10	TU1AB00015	BACK REST ASSY	1
11	U2-U11-086	ACCESSORY TOOLS	1
12	TU1AB00017	SWITCH HARNESS ASSY	1
13	TU1AB00018	FILTER ASSY	1
14	U2-U11-149	FILTER FRAME ASSY	1
15	TU1AB00020	MOTOR MOUNT ASSY	1
16	TU1AB00021	MOTOR ASSY	1
17	U2-U11-132	MOTOR COMPARTMENT ASSY	1
18	TU1AB00023	WIRING ASSY	1
19a)	TU1AB00024	UK POWER CORD	1
19b)	TU1AB00025	EURO POWER CORD	1
20	U2-U11-078	PAPER BAG (PACK OF 10)	1
21	BA01865582	RELIEF VALVE	1

Drawing/Part Number
09-1087-0000

Issue	Amendments	Sig./Date
A	NEW DRAWING	14.08.07 M.D.C.
B	CHANGE TO 32mm TOOLING	14.07.09 M.D.C.
C	RELIEF VALVE ADDED	30.11.11 N.P.D.

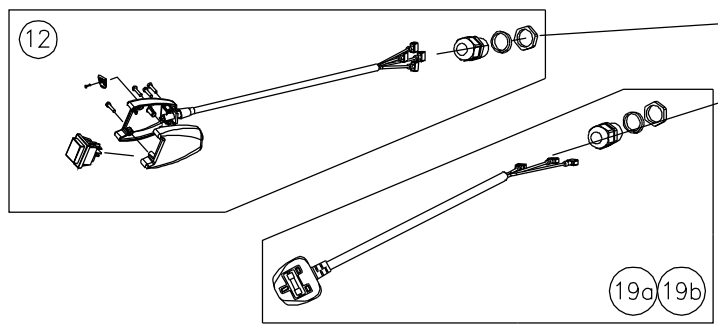
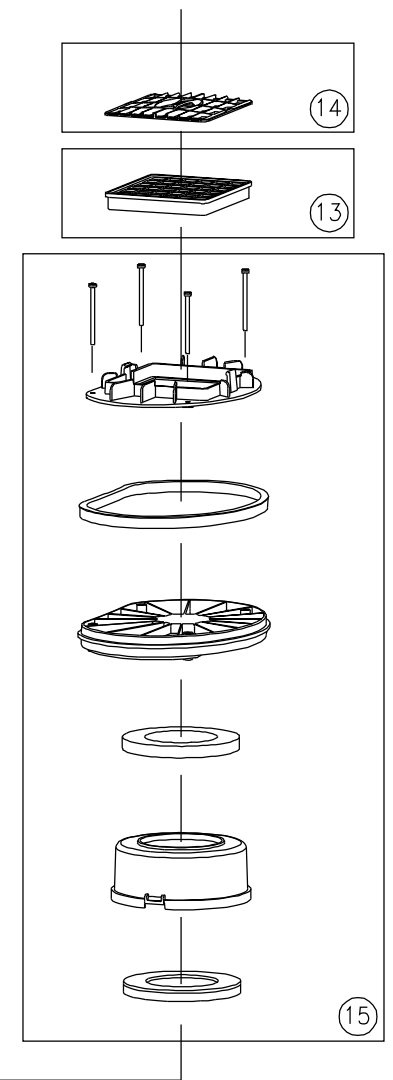
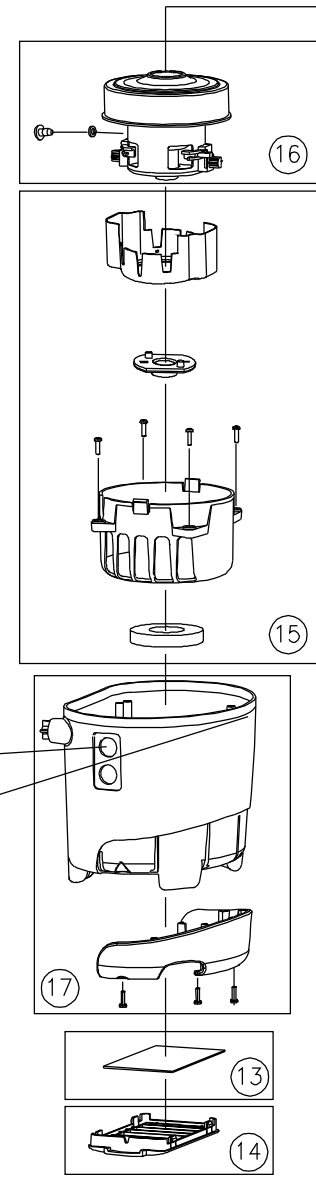
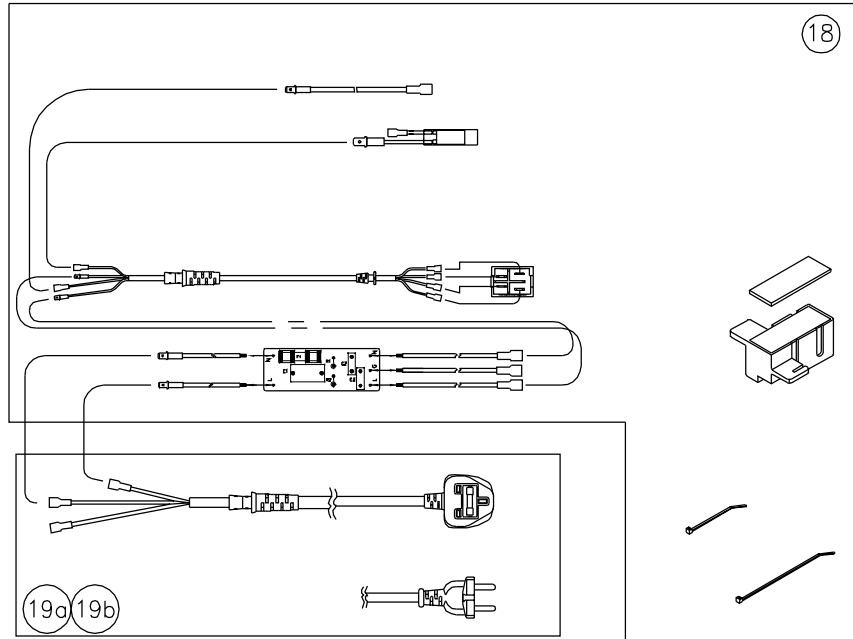


<p>3RD ANGLE PROJECTION DIMENSIONS IN MILLIMETRES DO NOT SCALE DRAWING © COPYRIGHT</p>	Material -----	General Tolerance NA	TRUVOXTM INTERNATIONAL LIMITED		Drawing/Part Number 09-1087-0000 SHEET 1
	Finish -----	Scale N.T.S.			
	Drawn M.D.C. Checked M.D.C.	Date 30.11.11			

RED
ON
MASTER

Drawing/Part Number
09-1087-0000

Issue	Amendments	Sig./Date
A	NEW DRAWING	14.05.07 M.D.C.
B	CHANGE TO 32mm TOOLING	14.07.09 M.D.C.
C	NEW RELIEF VALVE	30.11.11 N.P.D



3RD ANGLE PROJECTION
DIMENSIONS IN MILLIMETRES
DO NOT SCALE DRAWING
© COPYRIGHT

Material -----
Finish -----
Drawn M.D.C. Checked M.D.C.

General Tolerance NA
Scale N.T.S.
Date 30.11.11

TRUVOX INTERNATIONAL LIMITED
Title VALET BACK PACK
GENERIC ASSEMBLY DRAWING
Drawing/Part Number 09-1087-0000
SHEET 2

RED ON MASTER

14. EC Declaration of Conformity

Declaration of Conformity

We, Truvox International Ltd.

of Third Avenue, Millbrook,
Southampton, Hampshire
England
SO15 0LE

declare that the machinery

Make : Commercial backpack vacuum cleaner
Type : Valet BackPack
Model : VBP...

Serial Number : from 01000
Year of Construction : 2010

has been manufactured using the following transposed harmonised European Standards and technical specifications.

Ref No	Title
2006/42/EC	Machinery Directive and subsequent amendments
2006/95/EC	The Low Voltage Directive and subsequent amendments
BS EN 60335-1	
BS EN 60335-2-69	
BS EN 50366	
2004/108/EC	The EMC Directive and subsequent amendments
EN61000-3-2	
EN61000-3-3	
EN55014-1	
EN55014-2	

Signed in : SOUTHAMPTON, England

on the 29th day of December 2009

Signature :



Name : David Overell
Position : Managing Director



Technical file: VBP Iss. 1
Mark Campbell
Product Support Manager

Authorised dealer:

Truvox International Limited
Third Avenue, Millbrook, Southampton, Hampshire SO15 0LE, England
Tel: +44 (0) 23 8070 2200 Fax: +44 (0) 23 8070 5001
e-mail: truvox@truvox.com Web: www.truvox.com



A Tacony Company